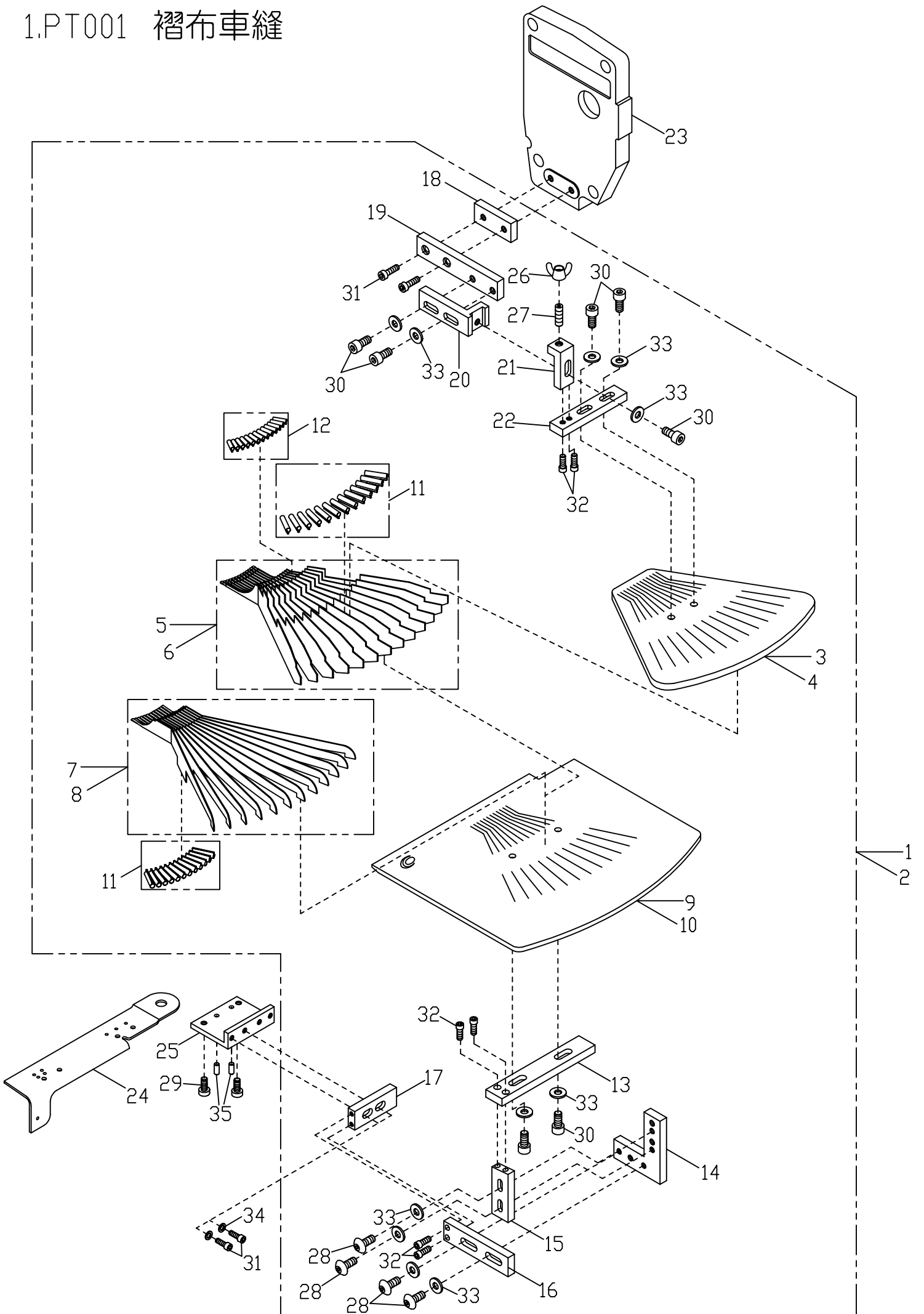


1.PT001 褶布車縫



1.PT001 褶布車縫

序號 Ref.No.	物料編號 Parts No.	名稱 Description	單位用量 Amt.Req.
*1	4PT001A0101	褶布車縫組 Gathering Asm. -----	-
**2	4PT001A0102	褶布車縫組 Gathering Asm. -----	-
*3	4PT0010103	固定座 Bracket -----	1
**4	4PT0010104	固定座 Bracket -----	1
*5	4PT0010105	成形導模 Folder -----	13
**6	4PT0010106	成形導模 Folder -----	13
*7	4PT0010107	成形導模 Folder -----	12
**8	4PT0010108	成形導模 Folder -----	12
*9	4PT0010109	固定座 Bracket -----	1
**10	4PT0010110	固定座 Bracket -----	1
11	4PT0010111	夾簧 Latch Spring -----	25
12	4PT0010112	夾簧 Latch Spring -----	13
13	4PT0010113	定位塊 Bracket -----	1
14	4PT0010114	固定板 Bracket -----	1
15	4PT0010115	支架 Support -----	1
16	4PT0010116	固定板 Bracket -----	1
17	4PT0010117	定位塊 Bracket -----	1
18	4PT0010118	定位塊 Bracket -----	1
19	4PT0010119	支架 Support -----	1
20	4PT0010120	定位塊 Bracket -----	1
21	4PT0010121	支架 Support -----	1
22	4PT0010122	固定板 Bracket -----	1
23	4PT0010123	針棒蓋 Needle Cover -----	1
24	4PT0010124	下座外蓋 Cloth Plate -----	1
25	4PMD010107	定位塊 Bracket -----	1
26	8MA08404020C	翼形螺帽 Wing Nut -----	1
27	8MN08401600E	螺絲 Screw (CT0618 M8-1*16) -----	1
28	8MP08502014A	螺絲 Screw (FTC10124 M8-1.25*20) -----	4
29	8MM06401210A	螺絲 Screw (FT1103 M6-1*12) -----	2
30	8MM08502013A	螺絲 Screw (CT0106 M8-1.25*20) -----	7
31	8MM06402010A	螺絲 Screw (SH0444 M6-1*20) -----	4
32	8MM05321409A	螺絲 Screw (CT0632 M5-0.8*10) -----	6
33	4PT0010133	墊圈 Washer -----	11
34	2100000323	墊圈 Washer (SH0323) -----	2
35	4RP0010103	銷 Pin (RP10103) -----	2

* 針距 1/4 專用

** 針距 3/16 專用